

## Report of the East North East Divisional Community Safety Partnership

Inner East Area Committee

Date: 23 June 2011

Subject: North East Divisional Community Safety Partnership Annual Report

### Electoral Wards Affected:

Killingbeck & Seacroft  
 Gipton & Harehills  
 Burmantofts & Richmond Hill

### Specific Implications For:

Equality and Diversity

Community Cohesion

Narrowing the Gap

Council  
Function

Delegated  
Executive Function  
available for Call In

Delegated Executive  
Function not available  
for Call In Details set  
out in the report

## Executive Summary

This report provides Members of the Area Committee with an overview of the performance of the North East Divisional Community Safety Partnership and ward based Neighbourhood Policing Teams. It will also include details of the key initiatives that have been delivered in local communities to reduce crime and disorder. The report focuses upon the period 1<sup>st</sup> April 2010 to 31<sup>st</sup> March 2011.

## Recommendations

The Area Committee is asked to note the contents of this report of the North East Divisional Community Safety Partnership.

Members are asked to continue supporting the Divisional Community Safety Partnership in relation to prioritising and tackling Burglary Dwelling during 2011/12 through partnership work at neighbourhood level.

## **Purpose of this report**

1. This report provides Members of the Area Committee with an overview of the performance of the North East Divisional Community Safety Partnership and ward based Neighbourhood Policing Teams. It will also include details of the key initiatives that have been delivered in local communities to reduce crime and disorder. The report focuses upon the period 1<sup>st</sup> April 2010 to 31<sup>st</sup> March 2011.

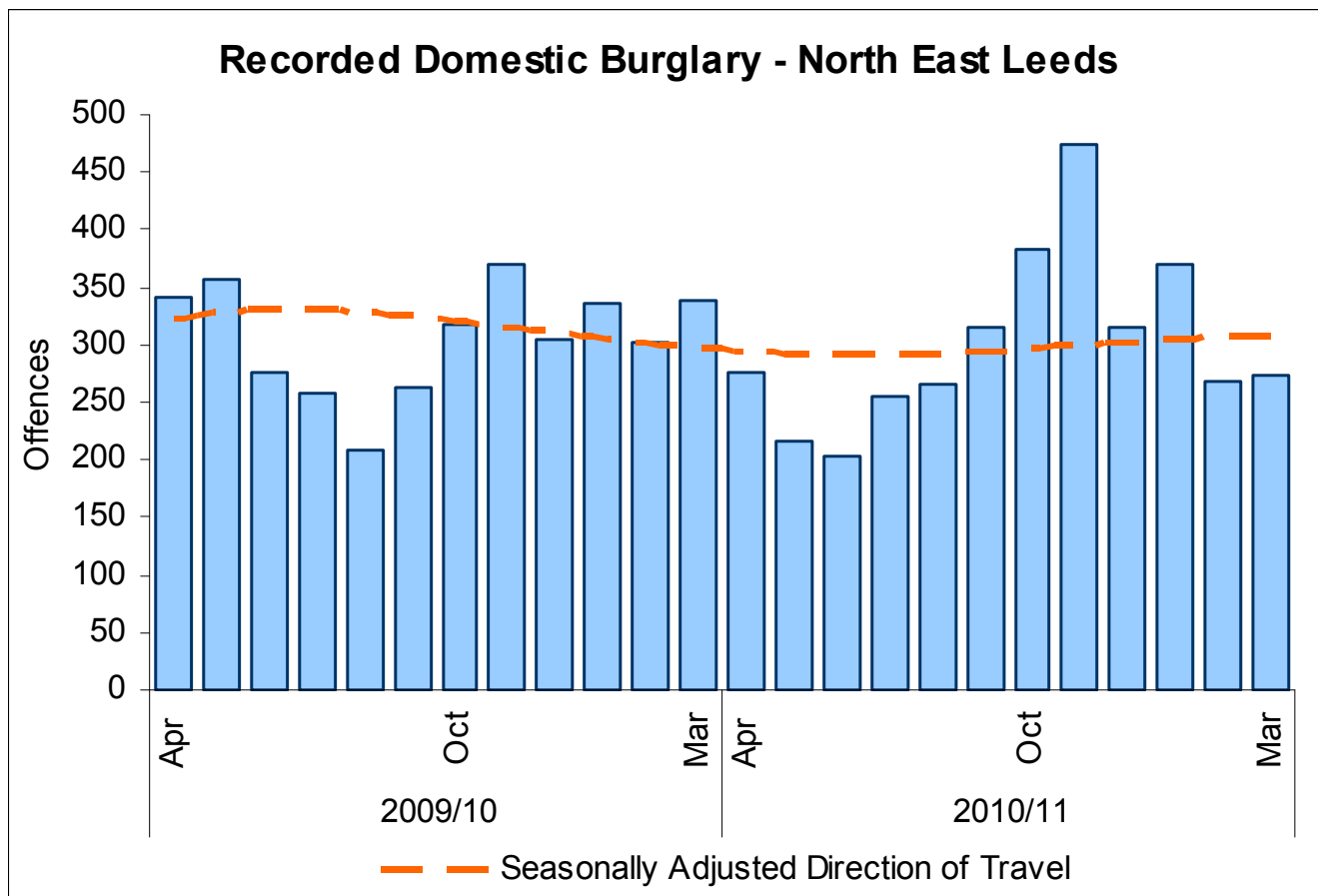
## **Background information**

2. The report will focus on the following key issues:
  - Update Members on progress and outputs of the Neighbourhood Management Tasking arrangements
  - Report on Thematic Sub Groups and activities
  - Report on the Performance of the NE Police Division and partnership
  - Summary of ward crime statistics, public confidence and user satisfaction
  - Report on multi-agency 'Operation Champions'
  - Report on agreed community initiatives funded via Proceeds of Crime confiscations (POCA).

## **Main issues**

### **Update on the structure of the North East Police Divisional Community Safety Partnership and Neighbourhood Management Tasking Arrangements**

3. The Divisional Community Safety Partnership (DCSP ) Strategic Plan 2011- 2015 is currently in development and will be the framework upon which the DCSP will develop activity and management performance against strategic outcomes of the city. This is defined by the Safer and Stronger Communities Board Partnership plan 2011-2015 which will focus on delivering the following strategic priorities:
  - Reducing crime levels and its impact across Leeds
  - Effectively tackle and reduce anti-social behaviour in our communities
4. We are currently awaiting ratification of the Safer Leeds performance targets and performance framework for 2011/12.
5. Attached is a brief of the final divisional targets (2010/11) based on actual outturns and divisional targets set for 2011/12 (see Appendix A).
6. Burglary dwelling remains a key pressure in relation to allocation of resources, both staffing and financial. Tackling burglary dwelling remains a key priority within the Division and across the whole of Leeds we are working closely with Safer Leeds Strategic Burglary Group to maximise opportunities for closer working and sharing good practise and continue to deliver initiatives at a local neighbourhood level. Although we missed our divisional target by 357 offences we still achieved a 1.6% reduction on 2009/10 despite high peaks in October, November and January (see chart on next page).



7. Attached is an updated structure chart for the North East Divisional Community Safety Partnership (see Appendix B) with details of the relevant lead officers. The structure will be reviewed to ensure delivery against new priorities.
8. A review took place in September to discuss multi-agency operations 'Operation Champion' across neighbourhoods and how it would be delivered during 2011. It was agreed to continue delivering a minimum of one day of action per Neighbourhood Policing Team per six weekly tasking cycle. The themed approach has proved successful and has led to more focussed targeting of issues/areas. A timetable has been produced for 2011. Please note that on occasions these dates may change due to operational demands or unforeseen circumstances.

### **POCA**

9. Following the success of the project during 2009/10, the North East Division allocated a total of £39,639 funding confiscated from criminals under the Proceeds of Crime Act to the Divisional Community Safety Partnership during 2010/11 to continue to support local groups with community projects/activities. In total, across the whole division, we approved and funded 124 applications and spent £38,677. We have received numerous emails showing appreciation and thanks of support. Information regarding the awards continue to be advertised in the neighbourhood management / Neighbourhood Policing Team newsletters and on the police Neighbourhood Policing Team websites. We will be continuing the scheme into 2011/12 and have received funding for the first quarter of the year. Appendix C provides a summary of projects funded in the Inner East area.

## **Public Confidence and Satisfaction**

10. North East Leeds continues to have the highest Public Confidence in Local Policing during 2010/11 at 60.3% (March 2011) compared with the West Yorkshire force average of 52.3%.
11. Operation Confidence commenced in February 2009 and is a contributing factor to the high rates of public confidence. The North East Division produces 11 neighbourhood management newsletters detailing partnership activity around crime and grime within the Neighbourhood Policing Team and delivers to 128,000 households. Feedback from residents continues to be positive and illustrates they are pleased to be kept informed around crime and grime issues. Funding has been secured for 2011 and contributions have been agreed by North East Police Division, East North East Homes, Aire Valley Homes and Safer Leeds Partnership.

## **Neighbourhood Management Tasking Key Achievements 2010/11**

12. The eleven neighbourhood management tasking teams continue to meet six weekly and are still firmly embedded into agencies day to day business and members continue to attend and support meetings.
13. This is not an exhaustive list of activities but includes key achievements from each of the 5 Inner East neighbourhood management tasking teams (data extracted from Divisional Community Safety Partnerships executive quarterly highlight reports).
14. **Gipton**
  - Fence repaired at back of a property on Gipton Approach. People no longer cutting through the garden.
  - 17<sup>th</sup> June, Operation Champion on St Wilfreds, environmental clean-up.
  - Beech Mount – Joint visit with partners regarding suspected drug use on premises.
  - Gipton Gate West & Briarsdale Heights. Youths accessing the blocks – noticeable calls to police from CCTV operators; Culprits identified. Joint visits to parents have been undertaken and warning letters have been sent out to those identified.
  - GAP – Young people accessing rear due to hole in fence, congregating/drinking on an evening, also getting onto roof; Neighbourhood Policing Team officers carrying out additional patrols. Tasking budget used to fund repairs to fence and anticlimb measures to roof (£800). In addition community payback have cut back hedges etc.
  - Information shared regarding break ins at Fearnville Allotments. Partnership approach to surveillance and monitoring resulted in suspect being caught and charged in September.
  - Supported numerous family activities through partnership attendance run by extended services and The children's centre.
  - Achieved agreement with Leeds Federated Housing to regularly monitor old Greenview Mount site in the run up to Bonfire night and clear any items which could be used for bonfires.

- Site visit with Parks and Countryside to establish practical solutions to reduce access to green space behind the Dog and Gun where 2 cars were burnt out recently. Earth mounds put in place to restrict access.
- 9<sup>th</sup> Dec joint day of action with the focus on reducing burglary dwelling in the St Wilfreds area, utilised tasking funding to purchase tremblers etc to target harden properties alongside crime prevention advise to victims.
- Repeat calls from Fire Service to attend void private property on Amberton Rd/Easterly Rd due to insecure garage. Worked with Environmental Action Team to ensure garage was secured and reduced calls to West Yorkshire Fire Service.
- Environmental audit and clean up in the 'Branders Area'.
- Stop and search operation on vehicles on Coldcotes Drive/Gipton Approach (as part of Operation Champion) alongside Leeds City Councils Environmental Action Team targeting illegal waste carriers resulting in the seizure of a large amount of drugs.
- Victim of hate crime identified and appropriate support given by agencies alongside improvements regarding security.

## 15. Harehills

- Action on drugs – Increased police patrols at Banstead Park.
- Police and Fire Service working with primary schools (Hovingham and Bankside) to promote fire safety messages.
- Relationship established with youth groups operating from the Pakistani Centre (Vision) and Old Tradex.
- 1.4.10 Operation Champion, the theme focussed on offender management and joint agency visits were co-ordinated to perpetrators.
- Bin yards on the Comptons – work commenced on an improvement scheme using a local company providing training to young people in construction trades.
- Operation Champion on 6.6.10 – Targeted environmental action.
- Development of £5k worth of additional summer activities for young people in the area.
- Harehills Festival (July).
- Planning and implementation of Section 30 Dispersal Zone.
- Joint intelligence gathering and information sharing operations within the Dispersal Area, along with joint patrols and youth diversion work with the Bilal Mosque. The youth diversion is a partnership between the Youth Service, the Mosque and the Police and is resulting in 3-4 evenings of activity per week.
- Operation Champion was carried out ahead of alleygates being installed in Back Hovingham Terrace/Mount/Grove, Dorset Road/Mount. Environmental clean up in the Hovinghams, Dorsets and Sandhurst areas.
- Following reports of anti-social behaviour in Harehills Cemetery, £21k well-being funds were secured by the Area Committee to fund boundary improvements to the cemetery and Connect Housing are providing security fencing to ten of their properties which are adjacent to the cemetery.
- Following an approach to the council by two registered Social Landlords (Places for People and Leeds and Yorkshire) a workshop was organised to scope out some targeted work in the Harehills triangle area to improve the local environment and support long term investment into the area by social housing providers.

- £2.5k Tasking monies set aside to support the project to improve the piece of land next to Hovingham Primary school in partnership with CATCH (new community group).

## 16. **Burmantofts**

- Operation Champions have taken place within the area in the Torres (7<sup>th</sup> April) and Lincoln Green (30<sup>th</sup> June).
- A large scale clean up took place Haselwoods which attracted over 120 volunteers.
- Lighting was installed in the ginnel next to the Kiln Public House to address anti-social behaviour issues and fear of crime in the area.
- Back to the Beat Operations have been taking place in each of the patrol areas within the Neighbourhood Policing Team and PCSO's have also been focussing on schools in the area. This has led to an increase in public confidence.
- Community Payback has been tasked to work in a number of areas within the Burmantofts and Lincoln Green area.
- Operation Champion has taken place within the area in the Bellbrooks and Cliftons (16<sup>th</sup> September).
- Police undertook proactive days of action around the Shakespeare tower blocks to help address a number of Anti social behaviour issues and raise confidence.
- Neighbourhood policing team were involved in the delivery of the 16s football tournament during the Summer holidays which provided diversionary activity and raised confidence with young people.
- Fortnightly burglary reduction initiative taking place in the burglary hotspot areas of the ward involving tasking partners.
- A set of environmental priorities have been established for the Tasking area: waste in gardens, dog fouling and bin yards.
- Burglary reduction project has continued to be supported by tasking partners and phase 2 of the project commenced in April
- A list of hotspot addresses have been produced which all tasking partners have been asked to prioritise over six weeks.
- Partnership work with BrownHill School regarding road safety.

## 17. **Richmond Hill**

- Gates have been installed on Back Cross Green Crescent to tackle anti-social behaviour and environmental fly tipping.
- Selective Licensing figures show 400 applications with 141 full licences issues, 119 draft licences issues, and proceedings have started on a number of uncooperative landlords.
- 6 full ASBOs and 1 interim ASBOs have been granted.
- Funding was approved for trembler alarms and other target hardening equipment.
- Operation Champion has taken place within the area in the Rookwoods (13<sup>th</sup> May).
- Back to the Beat Operations have been taking place in each of the patrol areas within the neighbourhood policing team and PCSOs have also been focussing on schools in the area.
- 'Lark in the Park ' took place and involved a large section of the community.

- Live on the Drive was a partnership event that provided activities for both young and old in Richmond Hill to create a positive atmosphere and send out the message of the community reclaiming the street and working with the young people of the area. The event took place on the 7<sup>th</sup> August 2010 on the grassed area next to Charlton Grove and on East Park Drive itself. The event attracted in excess of 250 people from the local community, including around 70 young people.
- Focus to address spate of vandalism and burglaries at Osmondthorpe Allotments.
- Operation Champion has taken place within the area in Cross Green and St Hilda's (6<sup>th</sup> Aug).
- Community Payback have been tasked to work in a number of areas within the West Park and Richmond Hill area.
- Police held a successful under 16s football tournament during the Summer holidays which provided diversionary activity and raised confidence with young people.
- Probation Service cleared a substantial amount of waste from the Copperfield Terrace area over several weeks
- Two Operation Champions have been delivered in the Aysgarths and Glensdales area of Richmond Hill

#### 18. **Killingbeck & Seacroft**

- Continued delivery of 'Operation Bellweather' one day of action fortnightly to reduce burglary dwelling.
- Multi-agency visits conducted to people dispersed under Section 30 Dispersal order.
- Tarnside Drive: Commenced multi-agency operation to take enforcement action against problematic tenants at location benefits agency involvement
- Continuance of Bicycle Workshop provision at the Dennis Healey Centre
- Housing, ASBU and NPT collaboration at Barncrofts to reduce youth ASB (house to house, tenancy visits, ASB warnings)
- Neighbourhood Policing Team and anti-social behaviour unit working together to tackle youth ASB at Easdale Mount.
- Brooklands Lane – Joint action NPT/ Housing/ ASBU collaboration to deal with noise/nuisance and criminality by occupants (ongoing).
- Planning meeting completed for "Back Yard Breeze" project: youth diversion for the summer in Seacroft.
- NPT/ASBU/Housing collaboration to gather evidence to progress application for crack house closure.
- Week of LeedsWatch CCTV van deployment into Killingbeck and Seacroft burglary hot spots.
- Tesco - Youth ASB resolved via police/signpost working in partnership - to identify and deal with those involved. Tesco now reporting isolated incidents only.
- Property on Ramshead Drive - problem tenant regarding: noise/ASB/suspected drugs etc. Arrested for causing public nuisance. ASB Closure Order obtained by ALMO.
- Blencarn garages – complaints regarding: youth anti-social behaviour, re-visited by NPT and positive feedback received. Tarnside Drive initiative - all addresses visited. Tenancy and garden action taken. Referrals to Department of Works and Pensions Benefits Agency.

- Hawkshead Crescent - all addresses visited and surveyed (mini-Champion and tenancy warnings issued).
- Alston Lane and Tarnside Drive have been targeted for some time regarding ASB and tenancy issues. Sustained partnership action and November's Operation Champion successfully addressed these issues and positive feedback has been received from the community.
- Ongoing anti-social behaviour and damage occurring in Parkway Towers/Court/Grange has been addressed by joint action undertaken by East North East Homes, ASBU and Neighbourhood Policing Team utilising Housing CCTV and joint intelligence a number of perpetrators have been identified. 13 Prohibition notices have been issued and almost 30 multi-agency warnings have been issued at Killingbeck Police Station. A number of ASB cases have been opened and parents recharged for damage caused by their children.
- A problem tenant at Ramshead Heights has vacated the property following attention from housing and noise nuisance team. As a result of CCTV and housing officer support two further problem residents have been arrested and charged with burgling another flat in the building. Tenancy enforcement is planned post-conviction.
- Possession of property granted following drugs warrant on Pigeon Cote.
- Closure order of a property on Ramshead Drive.
- Eviction of problem resident from Kentmere Avenue and tenancy enforcement against another tenant has addressed the issue of noisy, violent parties that made residents lives a misery and necessitated police involvement on more than one occasion.
- Operation Champion in partnership with Environmental Action Team and Housing agencies to address metal theft in the locality. Four vehicle check sites were actioned across the day and a large number of vehicles were stopped, enforcement notices issued regarding commercial waste licences and 4 arrests resulted.
- Reduction in fires being started on the Parklands Estate through Operation Champion information seeks, Fire Service leafleting, Police, Housing and ASB action against local youths. The vulnerable area is now being fenced using funds secured from ENEHL Area Panel.
- Operation Champions have been conducted targeting hate crime perpetrators and to reassure victims in the Parklands estate and Foundry Mill estate. Each operation involved Housing, Police, Leeds Anti-Social Behaviour Team and other agencies including HMCS. Target Hardening of 200 addresses has been funded through the Tasking budget in partnership with CASAC.

## **Thematic Sub Groups and Activities**

### **Most Active / Amber Nominals / Offender Management Burglary Pilot**

19. A Pilot commenced with regards to the offender management of known burglars. 20 nominals have been selected by the North East Division for the duration of the pilot. The group consists of Youth Offending Service, Probation, Housing, newly established anti-social behaviour unit and West Yorkshire Police. The group will identify where partnership work can be improved to ensure opportunities for closer working and management of offenders are maximised.



### **Media Campaign - Handling / Receiving Stolen Goods**

20. A marketing design has been produced 'Don't sit on the fence' and the design has now been ratified by Crime Stoppers and West Yorkshire Police marketing department. The campaign was launched during April 2011 following a city wide operation around specific targeting of second hand gold shops suspected of handling or receiving stolen goods.

### **Seacroft Burglary Reduction Plan**

21. The Seacroft Burglary action plan was completed on 25<sup>th</sup> June 2010. An evaluation three months after illustrated that the properties that had been target hardened had not been subject to full burglaries and we had 2 unsuccessful attempts. Feedback from residents was positive and demonstrated that they welcomed advice on crime reduction to reduce opportunities of becoming a victim of burglary.

### **Burglary Action Plan – Burmantofts/Richmond Hill**

22. A new burglary action plan has been agreed through the serious acquisitive crime group and focuses on 25 streets highlighted as hot spot areas. One day of multi-agency action takes place fortnightly and emphasises on the problem solving approach, Victim Location and Offender, and includes the following partners, CASAC, WYP, East North East Homes and Environmental Action Teams. The action plan commenced on 14<sup>th</sup> April and will run until 4<sup>th</sup> August 2011. In addition £5k was secured from the East North East Homes Community Panel to provide burglar alarms for repeat victims.

### **Burglar Alarms for Repeat Victims Gipton/Harehills (ex ALMO)**

23. The Inner East Area Committee agreed to contribute £7k to purchase burglar alarms for Bronze, Silver and Gold repeat victims (all tenures excluding ALMO). The funding has been allocated to CASAC and will focus on all repeat victims in the ward via the serious acquisitive crime group.

### **Designated Public Place Order – Seacroft & Killingbeck**

24. A report setting out the proposals for a Designated Public Place order for the area of Killingbeck and Seacroft was taken to the Licensing Panel (13 April 2010) and ratified. The legal order came into force on May 1<sup>st</sup> 2010. Signs have been fitted in identified locations across the Killingbeck and Seacroft Ward (see Appendix E).

### **Designated Public Place Order - Burmantofts**

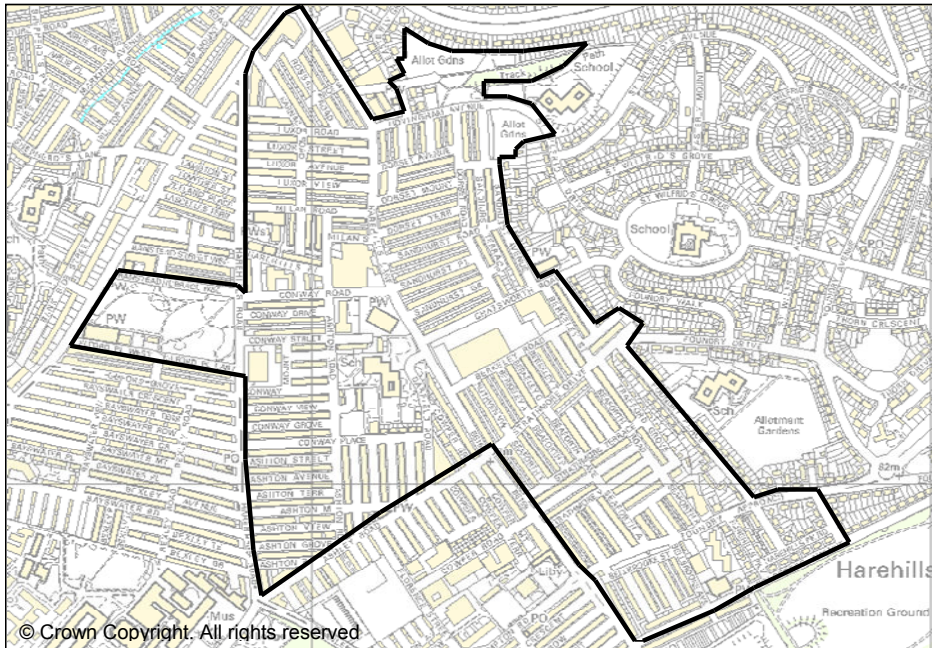
25. A report setting out the proposals for a Designated Public place order for the area of Burmantofts was taken to Leeds City Councils Licensing Panel on 21<sup>st</sup> December 2010 outlining the legal framework, summary of evidence and the consultation undertaken. The order was granted and came into force on the 17<sup>th</sup> January 2011 (see Appendix F).
26. Designated Public Place Orders (DPPOs) are made under the Criminal Justice and Police Act 2001. Under the Act, the Council can, by Order (or a series of Orders), designate public places within which it is an offence to consume alcohol after being

requested by a Police Constable or a Police Community Support Officer (PCSO) not to do so. An Officer can ask any person to surrender alcohol or open alcohol containers if the Officer reasonably believes the person is, has been or intends to consume alcohol in that place. In due course, wardens will be accredited to exercise these powers. Penalties for this offence include a penalty for disorder (PND) £50 or arrest and prosecution for a level 2 fine, maximum of £500. Bail conditions can be used to stop the individual from drinking in the public place pending prosecution for the offence. The legislation does not ban the drinking of alcohol in Designated Public Places, and therefore it **does not** prohibit drinking alcohol in authorised street cafes and at authorised public entertainment events in public areas. Legislation is designed to reduce anti-social street drinking either during the day (typically street users of alcohol and other substances) or in respect of night-time issues such as people drinking in the street and on the way to and from licensed areas or premises, e.g. in the queue for a club, having left a public house or in a fast food queue.

27. Section 26 of the Violent Crime Reduction Act 2006 came into force on 6th April 2007. It amended the Criminal Justice and Police Act 2001. Prior to this amendment pubs and clubs that have a licence to sell or supply alcohol under the Licensing Act 2003 could not form part of the DPPO. These premises would include public spaces licensed by local authorities for alcohol and regulated entertainment. This led to a conflict between the local authorities desire to licence public spaces for community events and the desire to use DDPOs to tackle anti-social drinking. This conflict was rectified by the amendment. There are no public places licensed by the Local Authority within the proposed area.
28. Under the amendment, premises where local authorities are permitted to sell or supply alcohol or premises that are occupied or managed on behalf of local authorities, for the sale and supply of alcohol will be excluded from a DPPO. The exclusion will only last while the premises are in use and for 30 minutes following the last supply/sale of alcohol. At all other times the premises will be subject to the DPPO.

### **Section 30 Dispersal Zone – Harehills**

29. The boundary of the zone was agreed between Harehills and Burmantofts Neighbourhood Policing Team Inspectors in consultation with partners. The order came into force on 2<sup>nd</sup> July 2010 initially for three months and was then extended to 31<sup>st</sup> December. Additional funding was obtained from the neighbourhood tasking teams to provide additional policing Friday to Sunday and was matched by resources from the North East Police Division. Detached work was agreed with Youth Service for Thursday and Friday nights and meetings were set up to further develop working relations with the Muslim Cultural Society at the Tradex building. In addition work commenced on the regeneration of the 'Hovingham' land adjacent to the school, several days of action were held with volunteers from the local community, children from youth groups and supported by the Neighbourhood Policing Team and West Yorkshire Fire Service.
30. The following evaluation report was produced by the North East Police Division to compare the number of PSA1 offences and ASB during the implementation of the order to the same time the previous year. The offences during the periods of the 1<sup>st</sup> July to 30<sup>th</sup> November of each year will be used to enable a like for like comparison.



31. **Crime** - During the period of 1<sup>st</sup> July to 30<sup>th</sup> November 2010 there has been a total of 328 PSA1 Crimes in the above outlined area of Harehills, where a S30 Dispersal Order has been in place. This is a difference of 17 offences, equating to a 5% decrease when compared to offences experienced during same period the previous year (345).

Occurrence Type	Jul to Nov 09	Jul to Nov 10	Diff	% Change
ARSON	3	6	3	100%
ASSAULT	50	66	16	32%
BURGLARY DWELLING	45	71	26	58%
BURGLARY OTHER	2	0	-2	-100%
CRIMINAL DAMAGE - NON DWELLING	3	11	8	267%
CRIMINAL DAMAGE - DWELLING	39	41	2	5%
CRIMINAL DAMAGE - MOTOR VEHICLE	40	29	-11	-28%
CRIMINAL DAMAGE - NON SPECIFIC	12	4	-8	-67%
DRUGS	36	17	-19	-53%
INTERFERENCE WITH M/V	3	1	-2	-67%
PUBLIC ORDER	13	11	-2	-15%
ROBBERY	8	10	2	25%
THEFT FROM PERSON	7	8	1	14%
THEFT FROM VEHICLE	71	44	-27	-38%
THEFT OF VEHICLE	5	2	-3	-60%
TWOC	8	7	-1	-13%
<b>Grand Total</b>	<b>345</b>	<b>328</b>	<b>-17</b>	<b>-5%</b>

32. The table above shows the breakdown by crime type of the number of offences experienced each year. Burglary Dwellings have seen the greatest increase, with 71 in 2010 compared to 45 in 2009, this is followed by Assault offences. Theft from Vehicle offences have seen the greatest decrease with 44 in 2010 compared to 71 the previous year. PSA1 Offences during 2010 have occurred throughout the day with an afternoon/evening, 13:00x23:00hrs, seeing a slight peak. The most offences occurred on a Saturday. During 2009 offences again occurred throughout the day with peak

times being at a slightly later time of 15:00x00:00hrs, and Saturdays experiencing the most offences.

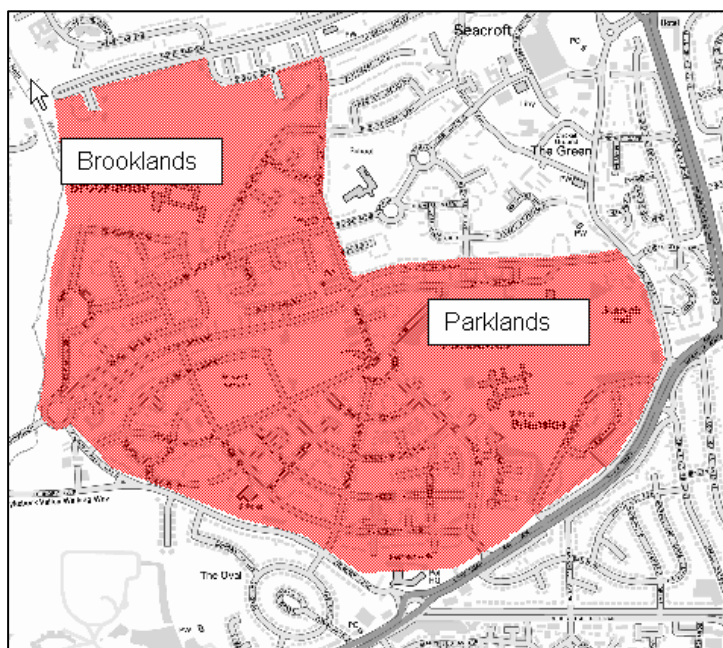
33. **ASB** - During the period of 1<sup>st</sup> July to 30<sup>th</sup> November 2010 there has been a total of 385 ASB Related Calls for Service in the above outlined area of Harehills, where a S30 Dispersal Order has been in place. This is a difference of 23 offences, equating to a 6% decrease when compared to offences experienced during same period the previous year (408).

ASB Type	Jul to Nov 09	Jul to Nov 10	Diff	% Change
ROWDY INCONSIDERATE BEHAVIOUR	274	259	-15	-5%
RNB - NEIGHBOURS	34	37	3	9%
FIREWORKS USE/SALE/POSSESSION	34	23	-11	-32%
MALICIOUS COMMUNICATIONS	19	23	4	21%
VEHICLE NUISANCE	3	11	8	267%
EMERGENCY SERVICE HOAX	23	8	-15	-65%
NUISANCE MOTOR CYCLE	13	7	-6	-46%
AAMV - NOT STOLEN/OBSTRUCTING	3	6	3	100%
ANIMAL RELATED PROBLEMS	1	4	3	300%
LITTERING/DRUGS PARAPHERNALIA	2	3	1	50%
NOISE	2	2	0	0%
BEGGING/VAGRANCY	0	1	1	NC
PROSTITUTION RELATED ACTIVITY	0	1	1	NC
<b>Grand Total</b>	<b>408</b>	<b>385</b>	<b>-23</b>	<b>-6%</b>

34. The table above shows the breakdown by ASB type of the number of incidents experienced each year. Rowdy Inconsiderate Behaviour logs have seen the greatest decrease, with 259 in 2010 compared to 274 in 2009. Emergency Service Hoax calls have also seen a decrease of 15 calls.
35. ASB related calls for service during 2010 have occurred throughout the day peaking in the afternoon during 17:00x1800hrs. The most of these were received on a Saturday. In the five months that the s30 Dispersal Order has been in place in the Harehills area the number of PSA1 Crimes and ASB related calls for service have both seen a decrease by 17% and 23% respectively, when comparing the offences and calls to the same months the previous years. Peak times and days of offences in 2010 have stayed relatively the same compared to offences in 2009. ASB in the last five months has been more concentrated around the hours of 17:00x18:00hrs, especially on a Saturday whereas in the previous year calls were throughout the 24hr period and on no particular day. (K Hannah Intelligence Analyst Dec, 2010)

### **Section 30 Dispersal – South Seacroft (Operation Baft)**

36. The Order commenced on 18 January 2010 in the South Seacroft area for initially 3 months and was due to expire on 31<sup>st</sup> March 2010. It was agreed however to extend the order for a further three months to June 2010 but to widen the area due to displacement issues reported by the community (see graph over page).

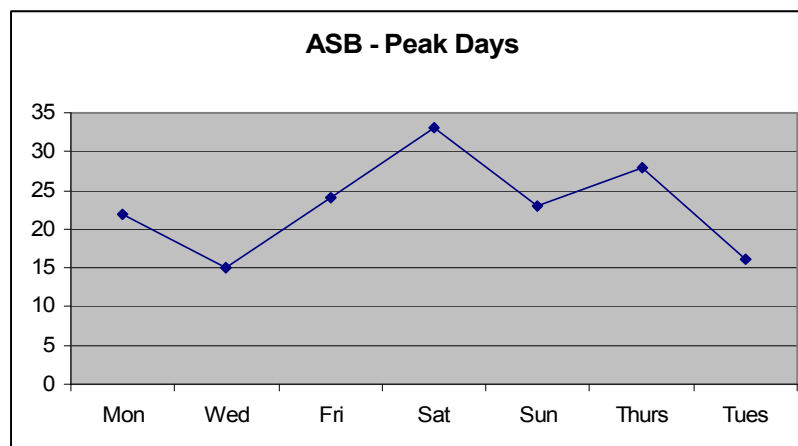


37. An evaluation was completed by North East Divisional Intelligence Unit Mid Jun to establish the impact on crime and ASB, with a view of planning additional youth activities in the area. The findings illustrated that overall crime in the dispersal area had reduced by 36% (84 offences) compared to the same period last year. Burglary Dwelling has reduced by 9 offences and Vehicle Crime has reduced overall by 11 offences. Criminal Damage offences have decreased by 45 offences compared to the same period last year.

Occurrence Type	17 Mar - 17 June 09	17 Mar - 17 June 10	Difference	Difference %
ARSON	5	3	-2	-40%
ASSAULT	22	31	9	41%
BURGLARY DWELLING	38	29	-9	-24%
BURGLARY OTHER	37	14	-23	-62%
CRIMINAL DAMAGE - BUILDING NON DWELLING	6	2	-4	-67%
CRIMINAL DAMAGE - DWELLING	58	17	-41	-71%
CRIMINAL DAMAGE - MOTOR VEHICLE	16	23	7	44%
CRIMINAL DAMAGE - NON SPECIFIC	9	2	-7	-78%
DRUGS	8	6	-2	-25%
INTERFERENCE WITH M/V	4	0	-4	-100%
ROBBERY	1	2	1	100%
THEFT FROM PERSON	2	0	-2	-100%
THEFT FROM VEHICLE	13	13	0	0%
THEFT OF VEHICLE	7	6	-1	-14%
TWOC	6	0	-6	-100%
<b>Grand Total</b>	<b>232</b>	<b>148</b>	<b>-84</b>	<b>-36%</b>

ASB Type	17 Mar - 17 June 09	17 Mar - 17 June 10	Difference	Difference %
AAMV - NOT STOLEN/OBSTRUCTING	5	0	-5	-100%
ANIMAL RELATED PROBLEMS	1	4	3	300%
EMERGENCY SERVICE HOAX	9	7	-2	-22%
LITTERING/DRUGS PARAPHERNALIA	1	2	1	100%
MALICIOUS COMMUNICATIONS	3	13	10	333%
NOISE	0	2	2	N/C
NUISANCE MOTOR CYCLE	19	27	8	42%
RNB - NEIGHBOURS	11	10	-1	-9%
ROWDY INCONSIDERATE BEHAVIOUR	106	92	-14	-13%
VEHICLE NUISANCE	2	4	2	100%
<b>Grand Total</b>	<b>157</b>	<b>161</b>	<b>4</b>	<b>3%</b>

38. There has been an increase of 3% (4 logs) in ASB logs in the dispersal area compared to the same period last year. The greatest decrease was for logs relating to 'Rowdy Behaviour' (13%, 14 logs) and the greatest increase was for 'Malicious Communications' (10 logs). The chart below highlighted the peak days for ASB since 17<sup>th</sup> March 2010 until 17<sup>th</sup> June 2010. Overall, the greatest amount of ASB calls were made on Saturdays and Thursdays. These have mainly occurred in the evenings between 17:00hrs and 22:00hrs.



39. ASB calls made on Saturdays saw a significant peak at 16:00 hours and on Thursdays at 14:00 hours. Logs which have occurred on a Saturday have mainly been in relation to problem youths on off- road bikes or fighting, domestic related disputes, neighbour disputes and people in drink being threatening and abusive. The most prevalent logs on Thursdays also relate to youths on off-road bikes and people in drink being rowdy and abusive.
40. Multi Agency visits to parents have taken place on 14 key individuals that had been stopped on several occasions during the first three months. Partners continue to support the development of the bike project at Dennis Healey Centre which is proving successful , tasking and funding from NE Police Division have funded the tutor and purchase of bike materials,. Meeting held with partners to develop exit strategy of Dispersal Order and planning of ' Back Yard Breeze ' which commenced during the summer school holidays.

### **Back Yard Breeze- Seacroft**

41. It was agreed to run this initiative in South Seacroft (hot spot for ASB) on Thursday evenings from the Dennis Healey Community Centre. The project commenced on 19<sup>th</sup> August 2010 for ten weeks and attracted 70+ young people. An evaluation report produced by Safer Leeds highlighted for the period 2010-11 as a whole there was a marked decrease in the number of ASB incidents reported as youth related. However It is not evident for Seacroft South that the project made a difference to total number of crime and ASB, however it is evident that a fall in both data sets occurred between 18:30 and 20:29 on Thursdays whilst young people were engaged in the project.

### **Tarnside Drive Area Enforcement Activity**

42. In June 2010 a multi agency enforcement plan was agreed with key partners, to have a co-ordinated approach to tackle problematic anti social behaviour that residents have been reluctant to report in the past. Several days of action were undertaken and specific enforcement action was successfully taken against individuals.

### **East End Park Bollards**

43. Local and statutory consultation was undertaken in accordance with legislation to revoke traffic measures. The three sets of bollards have now been removed and replaced with alternative traffic calming measures.

### **Alleygating /Problematic Ginnels**

44. During 2010/11 the following alleygating projects have been completed:
- Hovinghams and Dorsets
  - Cross Green Crescent
  - Back cross Green Ave

### **Mowbrary Crescent Seacroft**

45. Gate fitted to prevent ASB, drug dealing and fly tipping. Residents who have legal access have agreed to maintain gate long term. Community payback also cleaned the area to the rear of garages.

### **Harehills Cemetary**

46. Several site visits have been undertaken with relevant partner agencies to establish work required to address ASB /criminal damage. A crime prevention survey has been completed and a set of recommendations/costings were taken to the Inner East Area Committee. Ongoing work continues with community members and keeping them informed.

## **Hate Crime MARAC**

47. Co-ordinated multi-agency working is recognised as the most effective response to all issues of crime and disorder, including agency responses to the victims and perpetrators of hate crime. The Hate Crime sub group was re-organised in April 2010 and become a Hate Crime Multi-Agency Risk Assessment Conference (HC MARAC). The overall objectives of the group is to :
- Support and assist victims of hate crime in order to protect them and ensure that they are not re-victimised
  - Ensure that effective coordinated multi agency enforcement action is taken against perpetrators of hate crime to prevent their re-offending and to ensure successful prosecution outcomes at Court.
  - Contribute to the “Hate crime reduction agenda in Leeds”.
48. Overall the Inner East area has shown a decrease of 10.99% of hate crimes reported, this equates to a reduction of 20 crimes - A total of 162 crimes reported compared to 182 during 2009/10.

## **Domestic Violence MARAC**

49. The North East Divisional MARAC continues to meet monthly to develop multi-agency interventions to support victims of domestic violence. Overall a very successful year in relation to reduction of repeat victimisation of cases managed through the MARAC.

### **Domestic Violence Sub Group**

50. A successful domestic violence event took place at Kentmere Community Centre as part of the ‘16 days of action’ funded by Ward Councillors - approx 50 women attended and feedback from attendees was positive.

### **White Ribbon Campaign / Children’s Centre / Fathers day event**

51. An event took place on 23<sup>rd</sup> June at Fearnville Sports Centre specifically aimed at involving young men and promoting the ‘white ribbon’ campaign in partnership with Gipton Children’s Centre. A half day event took place using football to deliver messages of ‘protecting women against domestic violence’.

### **International Women’s Day – March 11**

52. An event was held on 8<sup>th</sup> March 2011 to celebrate ‘International Women’s Day’ in partnership with Zest and Safer Leeds. The Proceeds of Crime Act (POCA) funding contributed towards the event and domestic violence workshops were delivered around ‘Positive Relationships’.

## **Total ASBO’S in North East Divison - 7**

53. **Full ASBO’S by ward :**

Gipton/ Harehills 4 ( + 1 interim order)

Killingbeck & Seacroft – Nil

Burmantofts & Richmond Hill – 2 ( + 2 bolt-ons)



54. **ASBO Warnings served:**

Gipton & Harehills - 2

Killingbeck & Seacroft - Nil

Burmantofts & Richmond – 8

55. **Injunction Data**

Gipton & Harehills - 1

Killingbeck & Seacroft - 1

Burmantofts & Richmond Hill – Nil

**Overall Performance of North East Divisional Community Safety Partnership  
and Ward crime statistics**

**Performance Matrix - March 2011 - North East Leeds**

**Safer Leeds**

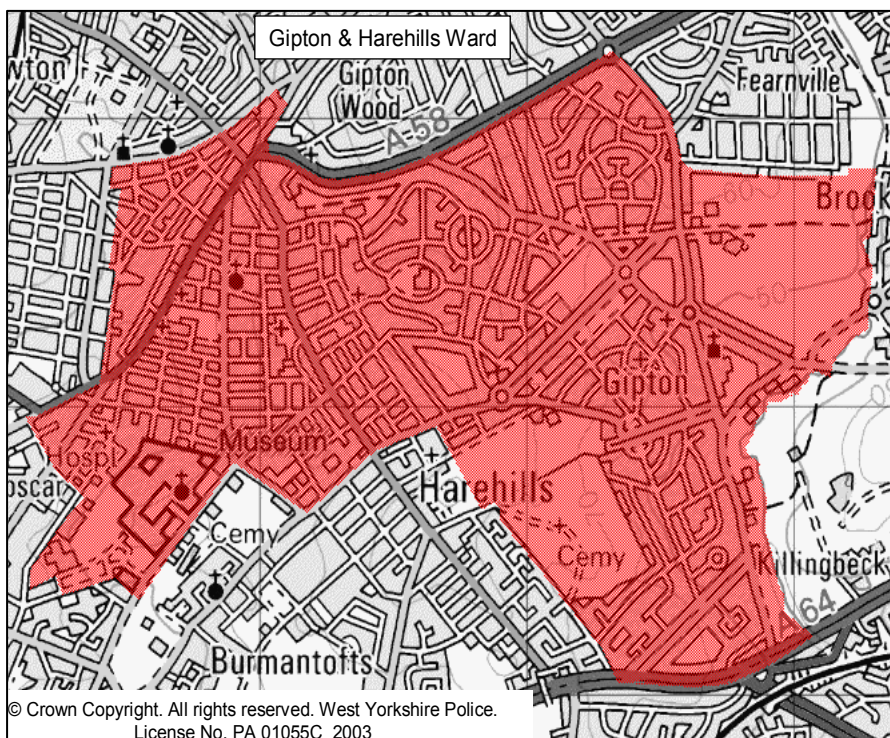
*tackling drugs and crime*

<b>Priority Indicators</b>	2010/11 Target	YTD	RAG Trend	Out-turn for 2010/11	<b>Assessment</b>	
NI 15: Reduce the level of serious violent crimes	158	151		151	Better than Target Projection: Stable Better than Peers	Out-turn is 4.4% better than the target.
NI 16: Reduce the level of serious acquisitive crimes	6,850	7,169		7,169	Better than Outturn Projection: Stable Worse than Peers	2010/11 out-turn is 1% better than the out-turn for 2009/10.
SL: Reduce the level of Domestic Burglary	3,258	3,615		3,615	Better than Outturn Projection: Stable Worse than Peers	2010/11 out-turn is 1.6% better than the out-turn for 2009/10.
NI 20: Reduce the level of assault with injury crime	1,704	1,741		1,741	Worse than Outturn Projection: Getting Worse Worse than Peers	2010/11 out-turn is 12% worse than the out-turn for 2009/10.
NI 32: Reduce the repeat victimisation rate for those domestic violence cases being managed by a MARAC	22%	11%		11%		Rolling year end result better than the target
WYP: Increase the proportion of residents who agree that the police and local council are dealing with the ASB & crime issues that matter in their area	54.7%	53.0%		53.0%	Worse than Outturn Trend: Stable	2010/11 out-turn is 0.7% worse than the out-turn for 2009/10.

**Crime & ASB: 10/11**

56. The below statistics show crime and anti-social behaviour from 1<sup>st</sup> April 2010 until 31<sup>st</sup> March 2011 compared to the same dates for previous year.

## Gipton & Harehills Ward



57. The below statistics show crime and anti-social behaviour from 1<sup>st</sup> April 2010 to 31<sup>st</sup> March 2011 compared to the same dates the previous year for this ward.

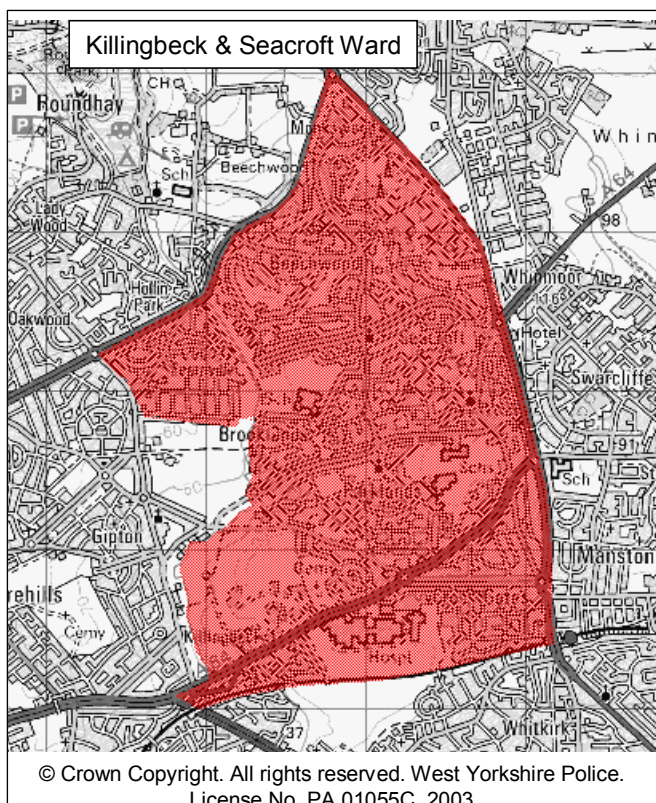
### **Crime & ASB Comparison: 2009/2010 to 2010/2011**

CRIME	GIPTON & HAREHILLS			
	09/10	10/11	Diff	% Inc / Dec
AGGRAVATED TWOC	20	7	-13	-65.00
ARSON	43	38	5	-11.63
ASSAULT	494	555	61	12.35
BURGLARY DWELLING	560	381	-179	-31.96
BURGLARY OTHER	125	183	58	46.40
CRIMINAL DAMAGE - BUILDING NON DWELLING	42	43	1	2.38
CRIMINAL DAMAGE - DWELLING	350	292	-58	-16.57
CRIMINAL DAMAGE - MOTOR VEHICLE	303	240	-63	-20.79
CRIMINAL DAMAGE - NON SPECIFIC	69	57	-12	-17.39
ROBBERY	83	88	5	6.02
THEFT FROM PERSON	71	72	1	1.41
THEFT FROM VEHICLE	493	347	-146	-29.61
THEFT OF VEHICLE	45	39	-6	-13.33
TWOC	50	24	-26	-52.00
<b>Grand Total</b>	<b>2748</b>	<b>2366</b>	<b>-382</b>	<b>-13.90</b>
<b>ANTISOCIAL BEHAVIOUR CALLS</b>	2830	2843	13	0.46
<b>Hate Crime</b>	75	72	-3	-4.00

## Public Confidence and User Satisfaction in the Police

Public Confidence	March 2010	March 2011	% Increase
Confidence in local policing	44.9	43.7	-1.2
<b>NPT ASB</b>			<b>% Decrease</b>
% of residents who think ASB has increased	18.6	20.3	+1.7
<b>NPT Awareness</b>			<b>% Increase</b>
% of residents aware of their NPT	46.2	36.5	-9.7
User Satisfaction	March 2010	March 2011	% Change
Overall satisfaction	72.8	81.9	9.1
Ease of contact	89.5	93.5	4
NPT Actions taken	70.3	77.5	7.2
NPT Progress	60.3	68.8	8.5
NPT Treatment	90.2	92.9	2.7

### 58. Killingbeck & Seacroft Ward Crime & ASB



59. The below show crime and anti-social behaviour from 1<sup>st</sup> April 2010 to 31<sup>st</sup> March 2011 compared to the same dates the previous year for this ward.

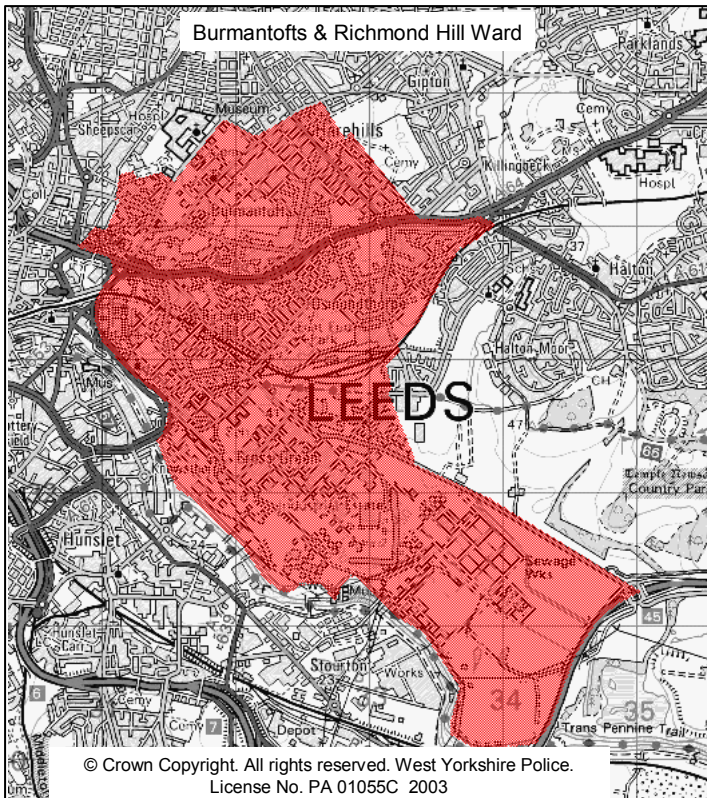
**Crime & ASB Comparison: 2009/2010 to 2010/2011**

<b>Crime &amp; ASB Comparison: 2009/10 to 2010/11</b>	<b>09/10</b>	<b>10/11</b>	<b>Diff</b>	<b>% Inc / Dec</b>
AGGRAVATED TWOC	6	5	-1	-16.67
ARSON	50	35	-15	-30.00
ASSAULT	373	432	59	15.82
BURGLARY DWELLING	438	436	-2	-0.46
BURGLARY OTHER	267	304	37	13.86
CRIMINAL DAMAGE - BUILDING NON DWELLING	62	53	-9	-14.52
CRIMINAL DAMAGE - DWELLING	343	276	-67	-19.53
CRIMINAL DAMAGE - MOTOR VEHICLE	283	272	-11	-3.89
CRIMINAL DAMAGE - NON SPECIFIC	79	68	-11	-13.92
ROBBERY	36	30	-6	-16.67
THEFT FROM PERSON	54	31	-23	-42.59
THEFT FROM VEHICLE	195	187	-8	-4.10
THEFT OF VEHICLE	48	74	26	54.17
TWOC	41	30	-11	-26.83
<b>Grand Total</b>	<b>2275</b>	<b>2233</b>	<b>-42</b>	<b>-1.85</b>
<b>ANTISOCIAL BEHAVIOUR CALLS</b>	2598	2502	-96	-3.70
<b>Hate Crime</b>	54	48	-6	-11.11

**NPT Public Confidence and User Satisfaction Summary**

<b>Public Confidence</b>	<b>March 2010</b>	<b>March 2011</b>	<b>% Increase</b>
Confidence in local policing	52.0	57.7	5.7
<b>NPT ASB</b>			<b>% Decrease</b>
% of residents who think ASB has increased	14.3	14.9	-0.6
<b>NPT Awareness</b>			<b>% Increase</b>
% of residents aware of their NPT	50.3	56.3	6.0
<b>User Satisfaction</b>	<b>March 2010</b>	<b>March 2011</b>	<b>% Change</b>
Overall satisfaction	82.7	77.4	-5.3
Ease of contact	92.5	94.7	2.3
NPT Actions taken	81.4	73.6	-7.0
NPT Progress	71.3	61.8	-8.5
NPT Treatment	91.5	91.6	0.1

60. **Burmantofts & Richmond Hill Ward**



61. The below statistics show crime and anti-social behaviour from 1<sup>st</sup> April 2010 to 31<sup>st</sup> March 2011 compared to the same dates the previous year for this ward.

***Crime & ASB Comparison: 2009/10 to 2010/11 – Burmantofts/Richmond Hill***

<b>CRIME</b>	<b>09/10</b>	<b>10/11</b>	<b>Diff</b>	<b>% Inc / Dec</b>
AGGRAVATED TWOC	24	5	-19	-79.17
ARSON	50	35	-15	-30.00
ASSAULT	387	461	74	19.12
BURGLARY DWELLING	444	575	131	29.50
BURGLARY OTHER	186	161	-25	-13.44
CRIMINAL DAMAGE - BUILDING NON DWELLING	37	44	7	18.92
CRIMINAL DAMAGE - DWELLING	277	298	21	7.58
CRIMINAL DAMAGE - MOTOR VEHICLE	295	235	-60	-20.34
CRIMINAL DAMAGE - NON SPECIFIC	61	81	20	32.79
ROBBERY	84	82	-2	-2.38
THEFT FROM PERSON	65	37	-28	-43.08
THEFT FROM VEHICLE	491	501	10	2.04
THEFT OF VEHICLE	32	38	6	18.75
TWOC	64	18	-46	-71.88
<b>Grand Total</b>	<b>2497</b>	<b>2571</b>	<b>74</b>	<b>2.96</b>
<b>ANTISOCIAL BEHAVIOUR CALLS</b>	<b>2486</b>	<b>2289</b>	<b>-197</b>	<b>-7.92</b>
<b>Hate Crime</b>	<b>53</b>	<b>42</b>	<b>-11</b>	<b>-20.75</b>

## NPT Public Confidence and User Satisfaction Summary

<b>Public Confidence</b>	<b>March 2010</b>	<b>March 2011</b>	<b>% Increase</b>
Confidence in local policing	43.4	53.6	10.2
<b>NPT ASB</b>			<b>% Decrease</b>
% of residents who think ASB has increased	21.8	24.2	+2.4
<b>NPT Awareness</b>			<b>% Increase</b>
% of residents aware of their NPT	49.4	48.4	-1.0
<b>User Satisfaction</b>	<b>March 2010</b>	<b>March 2011</b>	<b>% Change</b>
Overall satisfaction	81.2	79.0	-1.2
Ease of contact	88.9	95.0	6.1
NPT Actions taken	74.2	74.2	0.00
NPT Progress	66.3	64.2	-2.1
NPT Treatment	93.5	93.7	0.2

### Implications for Council Policy and Governance

62. There are no implications for the Council policy and governance.

### Legal and Resource Implications

63. There are no legal or resource implications.

### Recommendations

64. The Area Committee is asked to note the contents of this report of the North East Divisional Community Safety Partnership.
65. Members are asked to continue supporting the Divisional Community Safety Partnership in relation to prioritising and tackling Burglary Dwelling during 2011/12 through partnership work at neighbourhood level.

### Background Documents

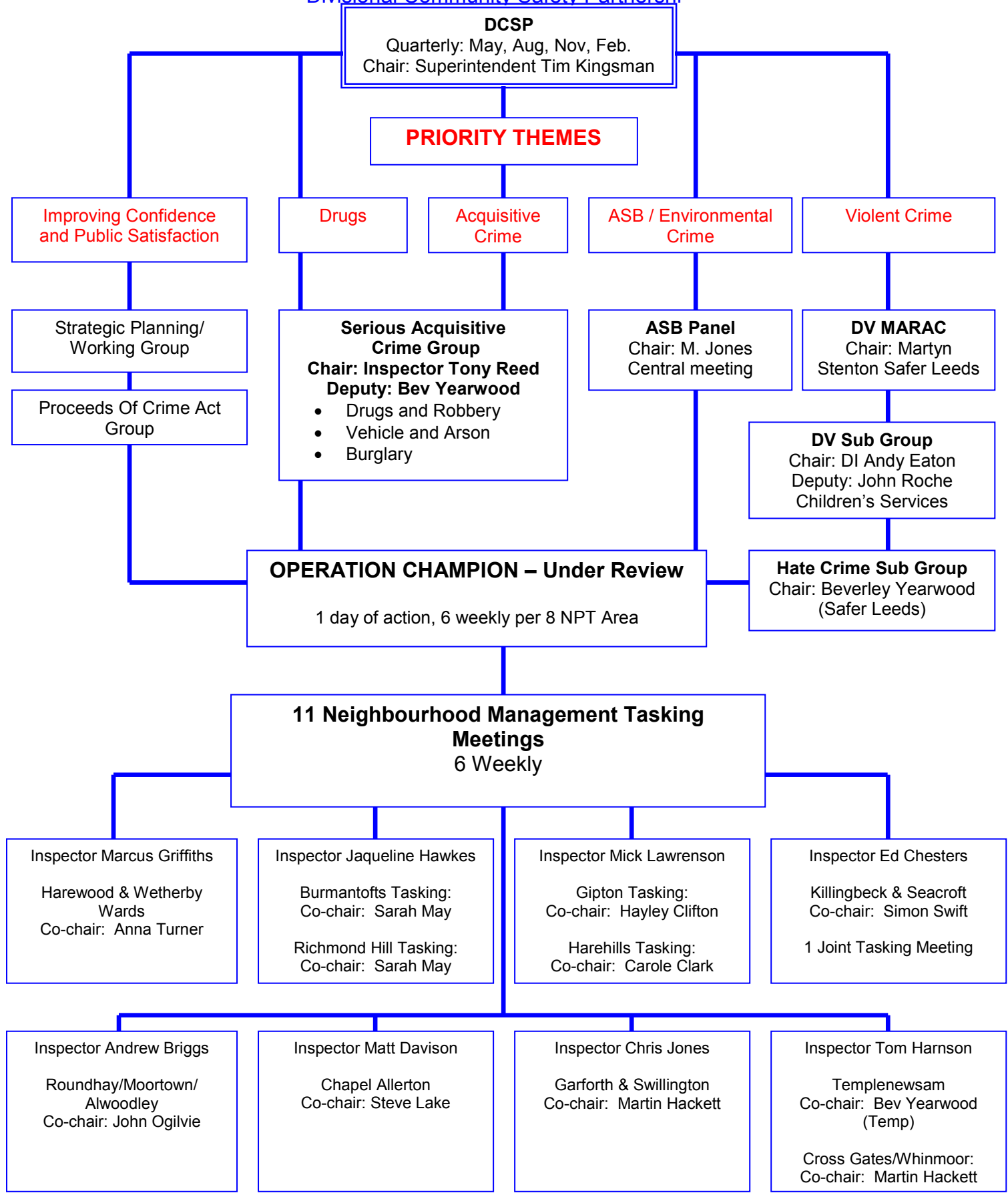
- Crime Statistics – North East Police Divisional Intelligence Unit May 2011
  - DCSP – Safer Leeds Quarterly executive highlight reports April 1<sup>st</sup> 1010- March 31<sup>st</sup> 2011)

## North East Leeds - 2011/12 Targets

Key Performance Indicator	2010/11 Outturn	2011/12 Target
Improve the proportion of residents who believe the police do an excellent or good job	60.3%	60.5%
Improve the overall satisfaction rate for service users	81.8%	82.5%
Improve the overall satisfaction rate for BME service users	75.2%	77.2%
Improve the overall satisfaction rate for White service users	84.8%	85.3%
Continue to tackle the level of acquisitive crime	7,169	7,169
Continue to tackle ASB to impact on the proportion of residents who believe that ASB has increased in their local area	13.1%	13.1%
Continue to tackle the level of serious violent crime	151	151
Stabilise the sanction detection rate for domestic violence	55.1%	54.9%
Stabilise the sanction detection rate for serious sexual offences	23.5%	28.0%
Reduce the level of burglary dwelling	3,615	3,434



North East Division  
Divisional Community Safety Partnership



<b>Killingbeck and Seacroft</b>				
<b>POCA Ref</b>	<b>Date</b>	<b>Brief Description</b>	<b>Organisation</b>	<b>Amount Paid</b>
169	16/04/2010	<b>New flower Boxes (Large wooden)</b> - Provisions of Large Wooden Flower Boxes to improve area and prevent illegal parking.	Seacroft Village Hall Management Committee	£250
171	10/05/2010	<b>Killingbeck and Seacroft Gala</b> - The gala is taking place on the 3rd July 2010 on the Seacroft Village Green. This is the sixth consecutive year that the Killingbeck and Seacroft Gala has taken place on the Seacroft Village Green. The gala aims to bring communities together through interaction, fun, information, activities and consultation. The gala will have information and activity stalls, funfair and inflatable's which will be free to enjoy, sports, competitions, exhibitions, music and much more. The Killingbeck and Seacroft Gala Committee are requesting funding to pay towards the cost of a DJ.	ENEAM	£250
185	23/06/2010	<b>Visit to the holocaust centres, Loxton, Newark NG22</b> by students of David Young Community Academy.	Council of Christians and Jews	£250
188	06/07/2010	<b>Doors Project Poetry Slam</b> - Using the concept of doors to explore the historical implications of how doors have been used to create barriers amongst people and the classes, and what skills do we need in the modern world to metaphorically open doors and remove barriers. Children will be encouraged to consider the modern day barriers of today in order for them to enjoy and achieve, be inclusive, accept diversity and make a positive contribution to their community. Two day workshops (1 at Temple Newsam house, the other at East Leeds FM). A joint workshop with Children's University (CU)Leeds and CU Bradford which will further explore diversity and inclusion, culminating in the opportunity for participants and a member of their family to attend Expressions Arts Festival in Seacroft and Ilkley Literature festival in October 2010.	John Smeaton Community College	£250
189	06/07/2010	<b>Play Scheme for 9-13 Year olds at Parklands Girls High School, Seacroft</b> - Play scheme activities for 9-13 year olds in Seacroft. 4 weeks from 2nd August up to and including 27th August Monday to Friday each week 10am-2pm. Each session can accommodate up to 40 young people aged 9-13 years. This will be extensively advertised through local schools.	John Smeaton Community College	£250
192	09/07/2010	<b>S.P.A.R.C Showcase Gala</b> - 24th July 2010 to showcase youth projects currently running on our estate to include presentations from other agencies e.g. fire, police, recycling, road safety, debt and finance etc.	S.P.A.R.C	£250
215	07/09/2010	<b>Seacroft Happy Families</b> - Key dates Autumn 2010 - Spring 2011 (but we hope to make this an ongoing service) Provide free complementary therapies and related activities to reduce stress, encourage health, improve well being, encourage family interaction and community cohesion.	West Yorkshire Well - Being	£250
217	16/09/2010	<b>What's on your Door Step</b> - Community Cohesion event held at Grange Farm Primary School in partnership with Residents association, grange farm primary school and extended services. An intergenerational event to promote community cohesion and community action in the North Seacroft Area by providing a range of activities for all ages.	Barncroft Residents Association	£200
219	24/09/2010	<b>Equipment and Transport Costs</b> - Printer Cable and paper for association use. Transport for tenants Christmas outing 18/12/10 plus transport for elderly tenants to attend coffee/ public meetings and days out in 2011.	Seacroft Gate Block one Tenants and Residents Ass	£203
229	25/10/2010	<b>Sing On The Green</b> - The Seacroft Sing on The Green is an annual Christmas event that works with the local residents associations, local schools, area management and local policing team to bring about positive celebration event of all the good things about the area to improve relations between	LS14 Trust	£250

		the community. Many skills will be developed through a local volunteering programme , events coordination , workshops , singing , creative writing, and a local enterprise market.		
231	17/11/2010	<b>South Seacroft Friends and Neighbours</b> - Christmas Celebrations, Gifts, decorations, food and entertainment.	South Seacroft Friends and Neighbours	£250
235	06/12/2010	<b>Seacroft, Swacliffe and Whinmoor Christmas Tree Festival</b> - An exciting event taking place on 9-12 December 2010. St James Church will be filled with 24 Christmas Trees (real ones) each lit and decorated by a school, community group or small business in the area. The Event will be staffed by volunteers from the seacroft churches and will also include refreshments, Santa's grotto and a community carol service.	Seacroft Parochial Church Council	£250
247	05/01/2011	<b>Killingbeck and Seacroft Gala</b> - 7th gala taking place on the 2nd July 2011 with performers, dancing, singing, information, stalls, sports, free activities etc.	Killingbeck and Seacroft Gala Committee	£500
265	01/02/2011	<b>Heads Together Productions</b> - This application is for some musical equipment to be used by young people at East Leeds FM. The young people are attending regular sessions at the ELFM base in Seacroft to develop their music and performance skills. We will be running a three day workshop at Feb half term plus a four day workshop at Easter. In addition we will be running regular sessions after school throughout the year.	Heads together Production	£500
267	01/02/2011	<b>Shoe String Music Studio</b> - The Sessions will be on a Tuesday in the workshop at Denis Healey Centre 16:00 - 18:00pm. The session will be called Shoe String Studio, Young people will have a opportunity to learn musical instruments, produce a music CD and learn to express themselves via music and lyrics.	Denis Healy Centre	£500
269	08/02/2011	<b>Creative Fun Youth Club</b> - Creative fun is a youth group for young people with learning difficulties and disabilities, which meets on a Friday evenings at the Dennis Healy Centre in Leeds. The group uses a mixture of structured and self directed activities to encourage and support the development of friendships and support networks.	People in Action	£500
282	22/02/2011	<b>The Pocket Panto</b> - South Seacroft Friends and Neighbours Scheme (SSFN) show for older people in an area of particular vulnerability/isolation	South Seacroft Friends and Neighbours	£500
283	22/01/2011	<b>Seacroft Methodists Church</b> – help with costs to repair facilities from recent vandalism and attempted theft of lead – to the facilities provided for community use (i.e. the hall) and the space given to SSFN to operate from (i.e. this is not about helping the church in terms of repairing the religious facilities). As mentioned could be a good publicity angle for POCA.	Seacroft Methodist Church	£500

#### Burmantofts & Richmond Hill

POCA Ref	Date	Brief Description	Organisation	Amount Paid
177	25/05/2010	<b>RHEA Working with and for local older people</b> - We would like to distribute a leaflet to residents in East End Park and adjoining areas of Richmond Hill to inform them of a surgery we are opening at Hawthorn Nursery, offering information and support for people of retirement age.	Richmond Hill Elderly Action	£120

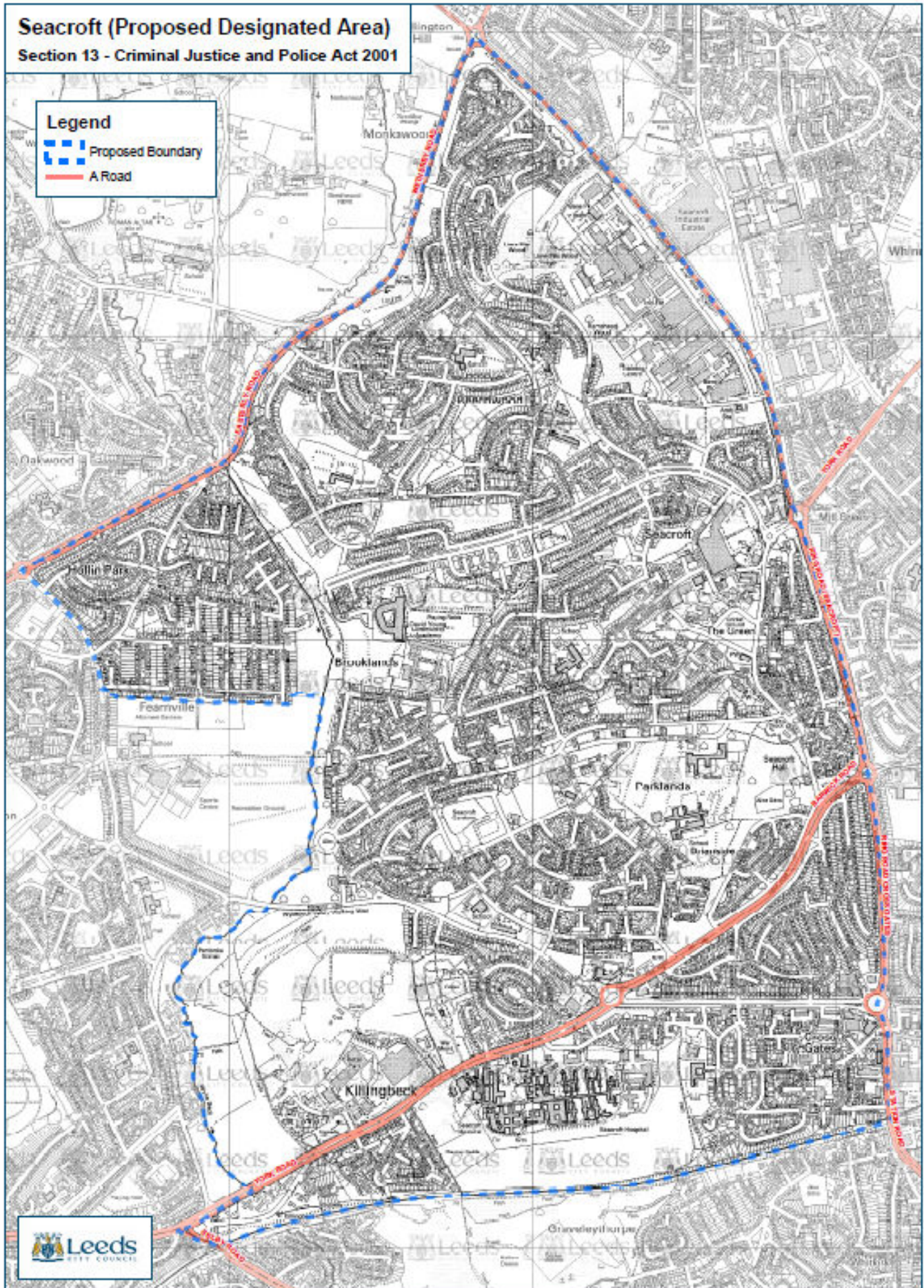
179	25/05/2010	<p><b>Osmondthorpe Allotment Site Security Improvements</b>  The Project will improve the security of the Allotment site and reduce incursions by unauthorised persons.  The grant will contribute to the purchase cost of Prunus Spinosa (Blackthorn) saplings to be planted along the site boundary lines. These boundaries run along the ginnel from Osmondthorpe Lane to Skelton Road, and along the football field fronting York Road.  The aim is to reduce access by unauthorised groups or individuals, to reduce the instances of crime including theft, criminal damage and arson on the site, and to reduce opportunities for antisocial behaviour by unauthorised people gaining entry to the site.</p>	Osmondthorpe Allotment association	£250
203	26/07/2010	<p><b>Fun Day –</b> Fun day on 13th August from 1 - 3pm at Osmondthorpe Children's Centre. This focus will be on safety, fire service, police and domestic violence.</p>	Osmondthorpe Children's Centre	£250
205	28/07/2010	<p><b>Fewston Court away day to Bridlington</b> - Date 20th August 2010 trip to Bridlington to get older residents out and about to do activities such as shopping, organised walk and socialising.</p>	Fewston Courts Tenants	£250
230	04/11/2010	<p>Further to our conversation today I am contacting you with details about my organization and why I am applying for P.O.C.A funding. I am a family health development worker and I work for a charity called Zest Health For Life.</p>	ZEST	£250
234	06/12/2010	<p><b>Zest Health for Life Christmas Santa Train Ride</b> - We are taking a coach full of families on a vintage railway train ride to meet Santa, the families will be from Leeds 9. We will be travelling on Saturday 18th Dec.</p>	Zest	£250
245	05/01/2011	<p><b>Health Awareness Promotion Project</b> - We would like to develop our Health Promotion –Awareness work and are planning in the new year to develop this work in line with the Department of Health's – Public Health Campaigns. All campaigns would be relevant to our client base e.g. in January each year we will provide information on Arthritis Awareness, in March we will provide information on Stop Smoking, Obesity and Prostrate Cancer, in April we would provide information on Parkinson's, Depression and Mental Health, identified promotions would continue throughout the year.</p>	HOPE	£420
250	07/01/2011	<p><b>Safety for the venerable in the G.S.B Area</b> - Supply and fit security equipment to the elderly residents of this association .</p>	Gargrave Stoney Rock Brignall Tenants Ass	£500
251	18/01/2011	<p><b>Purchase of equipment for friends of East End Park</b> - Purchase of banners to advertise our annual band concerts, and the community fun day Lark In The Park. Also to improve the existing rose bed near to the playing facilities.</p>	Friends of East End Park	£500
277	17/02/2011	<p><b>Community Pamper day and Health Awareness</b> - 25 March 2011, we are intending holding a pamper day and Health Awareness Day at Richmond Hill Community Centre for the community to attend.</p> <ul style="list-style-type: none"> <li>• We have booked students from Thomas Danby to come and do nails and massage and makeup.</li> <li>• We have a hairdresser.</li> <li>• We are also hoping to get students from Leeds Metropolitan to do sports massage.</li> <li>• We have also contacted the Men's Health Network and asked them to attend to inform on various Public Health Matters related to men.</li> <li>• We have invited Slimmer's World to attend.</li> <li>• We will be having a cafe and stalls selling various health related products, food, recipes, smoothies.</li> <li>• We are also inviting Leeds Lions to offer B.P checks.</li> <li>• We are having a crèche</li> <li>• Complimentary therapies</li> <li>• Exercise demonstration</li> <li>• Raffle</li> </ul>	Richmond Hill Elderly Action	£300

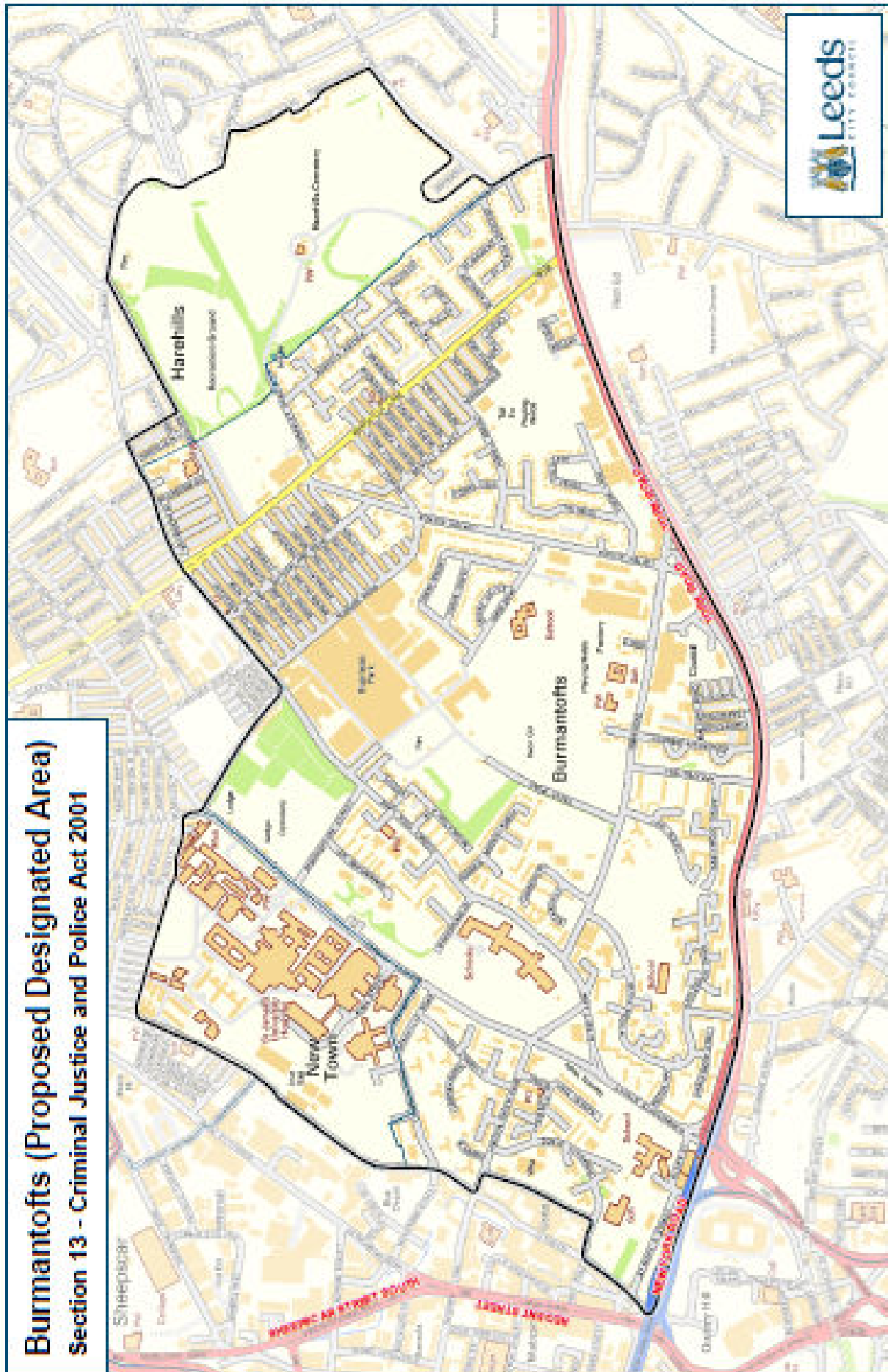
		<ul style="list-style-type: none"> <li>• Cafe</li> <li>• Fresh fruit &amp; vegetables</li> </ul> <p>PLEASE NOTE WE WILL ASKING FOR DETAILS OF INSURANCE ON ANY OF OUR STALL HOLDERS WHO ARE PROVIDING A SERVICE.</p>		
279	17/02/2011	<b>International Women's Day</b> - 8th March Celebration of International Women's day at Mega Centre on York Road.	Zest - Health for Life and Safer Leeds	£250
288	01/03/2011	<b>Rugby Football League</b> - To Organize a league for all Day at East Leeds Rugby club, The day would consist of Touch, Tag and Masters rugby for the local community and also people who have never played the game. The day we would like to organise the event is Saturday 2nd July.	Rugby Football League	£325

### Gipton & Harehills

POCA Ref	Date	Brief Description	Organisation	Amount Paid
170	10/05/2010	<b>Harehills Festival</b> - The gala is taking place on the 24th July 2010 on the gala aims to bring communities together through interaction, fun, information, activities and consultation. The gala will have information and activity stalls, funfair and inflatable's.	Shine	£250
198	19/07/2010	<b>Curry Night</b> - I would like to ask if you guys could please grant us £250 towards the costs of setting up the BORA event. This event will be open to the young and elderly people from all ethnic backgrounds - there will be free entry and food and entertainment.	BORA	£250
225	11/10/2010	<b>Gipton Methodist Toddler Group</b> - Toddler Group for the community runs every Thursday 9:30am - 11:15am. A key group in the community with 35 children on the register. Offers great support to parents from teenage mums to 40 year old mums.	Gipton Methodist Toddler Group	£250
226	11/10/2010	<b>Diversiory Activities for young people in Dispersal Area of Harehills</b> - Hire of the multi use hall for activities for young people who are being dispersed from streets of Harehills by the Police. Sessions will run each Sunday evening 8:30pm - 10:30pm.	Muslim Cultural Society	£250
263	01/02/2011	<b>Youth Station</b> - New project that requires equipment to run sessions and activities. This will help us to work more closely with young people who are at risk of offending or are offending. We want them to understand to make positive decisions around their lives, so they can be more active in the community. Key aim is for them to volunteer and taking a lead on dealing with issues around their lives and community. We will involve young people in the planning and delivering of the sessions. This will give them a sense of ownership to the project and make them feel proud.	Bangladesh Centre	
268	08/02/2011	<b>Parenting Fathers</b> - We are planning to run a parenting programme for fathers of children between 5 to 16 years. Focused around parents of children with low to moderate behavioural problems in this age range. The aim is to improve father and child relationships, improve child emotional well being and reduce the symptoms of behavioural problems. Early interventions can lead to young people avoiding being anti social and being criminalised. We want to use the award to visit a similar group in London who have had this type of programme delivered to them. To see how they are coping and share ideas and good practices. Members of the programme will contribute to the travel costs and for some it will be the first time travelling outside of Leeds. We hope to travel in May 2011.	Bangladesh Centre	

270	08/02/2011	<b>Junior Cricket Team</b> - This project is aimed at setting up a junior Cricket Team in Harehills. To develop interest in this sport, CATCH has approached Yorkshire Cricket School and put together a joint programme to deliver a Cricket Coaching for up to 12 young people over a 10 week period at Yorkshire Cricket School in Headingley Leeds with a professional coach. This will also involve taster sessions to take place within venues in Harehills before the programme starts. Young People in Harehills. Young people will be transported to Yorkshire Cricket School in a mini-bus. The aim is to continue this Cricket Coaching in summer however outdoor in Harehills.	CATCH - Community action trust for change in Harehills	
276	15/02/2011	<b>STAR Story Telling and Reading</b> - Story time for preschool children and their carers with the aims of encouraging parent to child interaction: fostering a love of books for the children and also helping the parents with English.	Bankside Primary School	
289	01/03/2011	<b>Action for Gipton Kitchen Equipment</b> - to provide new crockery, kitchen/table ware for Action for Gipton Elderly. We have seen a large increase in attendance at all our lunch clubs and we do not have enough cutlery, cups, plates etc and the ones we have are very old and need replacing. We also need a much larger tea urn. I would like to kindly ask the panel to consider a grant of £480 which will be of tremendous benefit to the elderly people of Gipton.	Action for Gipton Elderly	
292	03/03/2011	<b>Briarsdale Croft Community Room Revamp</b> - Community room being revamped, need additional chairs, cups net curtains etc. This will be used to facilitate a range of projects within the community room.	Briarsdale and Gipton Gate TRA	
253	18/01/2011	<b>Sound and Light Equipment</b> - Purchase of two follow spot lighting stands and a dual wireless microphone set. Needed for performance w/c 20.2.11	Metro Goldwyn Gipton	£250
222	28/09/2010	<b>To record and launch Domestic Violence radio drama titled "Prince Charming"</b> - The aims and objectives of the radio drama are to raise awareness of DV and gain community support from amongst the BME community where DV is very much a taboo subject. The script has already been written by ex-councillor (Roger Harrington) which was greatly received as a new and innovative way of raising awareness of DV in the BME community. Funding is now needed to record the script which will be aired during the 16 days of action (funding permitting). The drama will also include helpline numbers for people to call.	Radio Asian Fever	£250





REF: 2010 - MSC - 0074

PRODUCED BY NEIGHBOURHOOD SERVICES, LEEDS CITY COUNCIL  
This map is based upon the Ordnance Survey's Digital Data with the permission of The Ordnance Survey on behalf of Her Majesty's Stationery Office.  
© Unauthorised reproduction infringes Crown Copyright and may lead to prosecution or civil proceedings. © Crown Copyright. All rights reserved. Leeds City Council 0.8. Licence No. 100016687 (2013)